



Wellington
School

Founded 1595

Building for the Future A new Sixth Form Centre



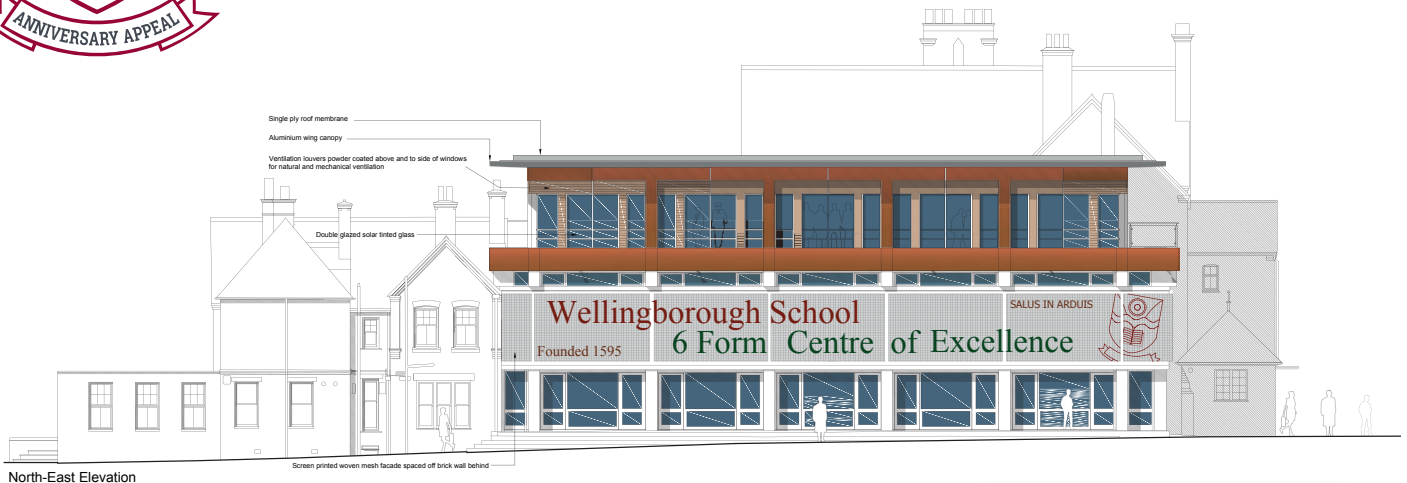
425th

ANNIVERSARY APPEAL

425th

ANNIVERSARY APPEAL

A message from The Earl Spencer



North-East Elevation



I am truly delighted to become the Patron of the Wellingborough School Foundation, and I wish the School every success in its 425th Anniversary Appeal for a new Sixth Form Centre.

My grandfather, the 7th Earl Spencer, served as the School's Chairman of the Governors from 1946 to 1972. During his tenure he presided over two major fundraising appeals – for the Dining Hall in 1959, and then for the Music School in 1971. Both campaigns were well supported, by parents and Old Wellingburians alike.

The appeal brochure for the Dining Hall makes for fascinating reading, and much of its wording is just as relevant in the present age:

“Today the demands upon the School are greater and perhaps more vital to the future than ever before. We are living in a rapidly changing society and the School must once again accept the challenge of change and fit itself to meet the future... The time has now come for development to enable the School “TO SERVE THE FUTURE” as it has served the past. For success in this venture your help is vital”.

Sixty years on, the School has the ambition and the vision to build a new Sixth Form Centre on the roof of the Dining Hall. This will form the centrepiece of the School's 425th anniversary celebrations, and I commend this Appeal to you.

Spencer

The Earl Spencer
Althorp
January 2020

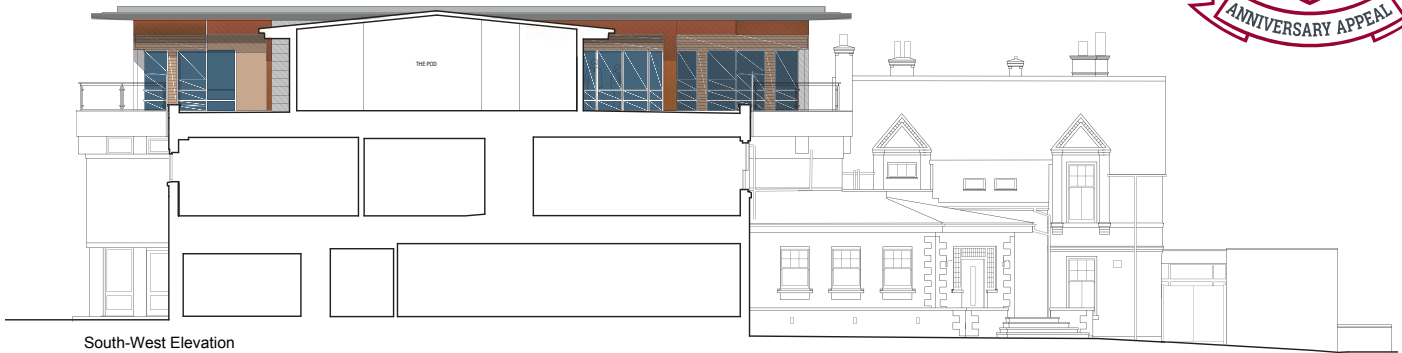


The Stables, Althorp, Northampton NN7 4HQ Tel : +44 (0)1604 770006 Fax : +44 (0)1604 770042
email : mail@althorp.com www.spencerofalthorp.com



1595 - 2020

TO SERVE THE FUTURE



Message from the Headmaster

From the moment I was appointed in January 2018, as our 39th Headmaster, pupils talked to me about their desire for a space of their own once they reach the Sixth Form – accommodating the different ways in which A Level students study, and enabling them to work in a conducive atmosphere, alone or in groups.

The Sixth Form marks a transition into adulthood; our students expect and deserve to be treated appropriately. A new Sixth Form Centre will be a physical manifestation of our recognition and understanding of what is needed to support them in those crucial years as they prepare for the world of university or employment.

And so the Governors have committed to build a £1.5 million Sixth Form Centre above the Dining Hall.

Asking for your help

To achieve this, we are asking for your help in raising £425,000 towards the target. Why £425,000? Because 2020 marks the 425th anniversary of the School, and the new Building will be the centrepiece of our celebrations.

The School can fund the cost by a mixture of reserves and borrowing, so why are we asking for your help? Because every penny raised will help to reduce the amount of interest we pay on the bank loan and will free up funds for much-needed projects in other parts of the School.



Andrew Holman
Headmaster

Don't current parents already do enough by paying the fees? The simple answer is that the School's budget is extremely tight each year: through prudent financial management we do generate a surplus each year, but that is insufficient to meet all our needs. We have no historic endowments, and fee income alone cannot fund the needs of the future.

As you will see in this brochure, each generation of Wellingburians has benefitted from the generosity of those who have gone before us. Since I arrived in 2018, I have been bowled over by the number of parents (past and present) and grandparents asking how they can show their support for this venerable old charity. For many, it's a desire to do something tangible that will benefit your own children directly while they are here. For others, it is a desire to "give something back", a wish to help the next generation, and perhaps an opportunity to be remembered for posterity.

Make The Pledge

And so we are asking you to help by **MAKING THE PLEDGE** - agreeing to waive the return of your child's deposit when they leave. A simple act of generosity like this can make such a profound difference. Mrs Owen and I are leading the way – we have already pledged to waive the return of our deposits. There is something very special about Wellingborough, and I invite you to take this opportunity to support us.

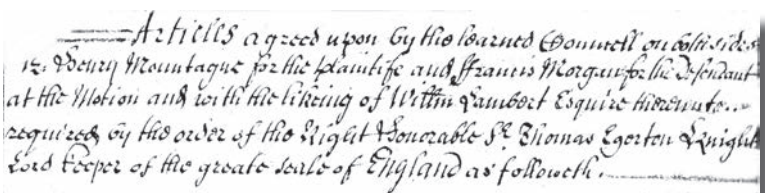


425th

ANNIVERSARY APPEAL

Four Centuries of support

The 1595 Articles



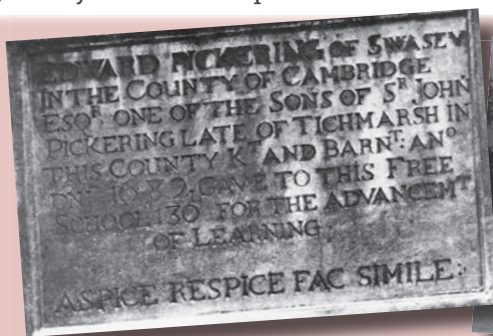
1595

The School dates back to Tudor times. In 1548 the protestant King Edward VI suppressed a medieval Catholic association (a Guild) in the town that had been founded back in 1392. But what should happen to the land gifted to the Guild down the centuries? The King's Commissioners urged Edward VI: "it might please the King's majesty to erect there a free Schole, apoynting the same landes towarde the same"

The King agreed, the Guild's land was sold, and by 1595 the sale proceeds had been used to establish the School.

1682

Our first known benefactor is Edward Pickering. In 1682 he gifted £130 'for the advancement of learning'. In 1711 Richard Fisher left a legacy of £15 per annum 'for the further advancement of learning'. To this day a plaque can be seen at the Old School in the town centre, commemorating for all time their generosity.



Remembering Edward Pickering, 1682

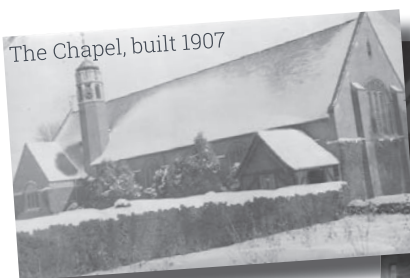


The Old School

1881

In 1881 we moved to our current site. Under the new headmaster, Henry Platt (1879-1907), pupil numbers rose steadily from 17 to 340, with new buildings galore. Among these were the School Hall (1895) and the Chapel (1907), paid for by Old Wellingburians and other supporters. We owe a debt of gratitude to these farsighted and generous benefactors.

(1907), paid for by Old Wellingburians and other supporters. We owe a debt of gratitude to these farsighted and generous benefactors.



The Chapel, built 1907



The School Hall, built 1895

1918

Remembering the Fallen of the Great War

In 1918 the School launched a memorial fund to perpetuate the memory of the 177 former pupils and the four masters who had fallen in action. Over the next 85 years some 323 pupils received leaving scholarships as a result, until the Fund's coffers ran dry in 2003.

1919
1939

Between the wars

The period 1919-39 was very tough for the School, but some development continued, such as the Thatched Pavilion in 1929 (paid for out of tuckshop profits, allegedly) and then the Gymnasium (now the Preparatory School Hall), paid for by OWs.

1940s

Remembering the Fallen of the Second World War

In the late Forties a new generation of OWs and past parents donated funds to boost the War Memorial Scholarship Fund, in memory of the 95 Old Boys who had fallen in action.

1950s

The Fifties

Under headmasters Tom Nevill (1940-56) and Humphrey Bashford (1956-64) the School managed to build up a small surplus each year and establish a capital development fund. In 1958 this fund helped to pay for new Biology laboratories. Then came the first major Appeal in over 25 years, as some 300 parents and OWs donated the modern equivalent of £750,000 towards the cost of a new Dining Hall in 1959.

Plans for the Dining Hall, 1959



1595 - 2020

**EVERY GENERATION HAS BENEFITTED
FROM THE GENEROSITY OF PREVIOUS GENERATIONS**

Four Centuries of support

425th

ANNIVERSARY APPEAL

1960s
1970s

The Sugden era

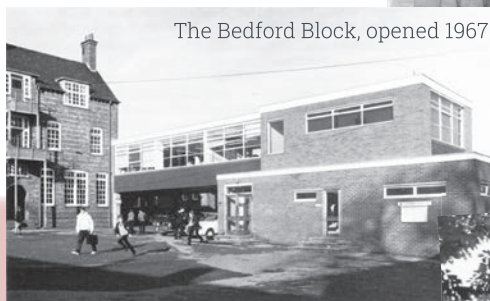
Under the headmastership of John Sugden (1965-73) the work to develop the School continued. In 1966 an Appeal was launched for an extension to the Preparatory School, a new tuckshop and a new day house, and local philanthropist Sir Cyril Cripps came forward with

a major donation. Cripps' House is a lasting testimony to this remarkable benefactor. This was followed by the Music School in 1972 and the Spencer Art Block (now the Pre-Prep) in 1974.

The Dining Hall (1969)



The Bedford Block, opened 1967



1970s
1990s

The Garrett era

Graham Garrett (1973-93) spearheaded further development, and the School became fully co-educational in 1979.

In 1981 the School marked 100 years on our current site by launching an appeal for a new Sports Hall. Some 357 OWs and parents supported this appeal, and the names of the principal donors are recorded for posterity outside the Sports Hall. In 1988 a further appeal helped towards the development of the Design & Technology Centre, and in 1990 the Pre-Preparatory School was opened.

The Pre-Prep, opened 1990



The Music School, opened 1972

2000-

The past 25 years

In the Nineties the School was unable to withstand the national decline in boarding numbers, and the tough

decision to end boarding was made in 2000. Under Ralph Ullmann (1993-2004) and Garry Bowe (2004-2017), the School continued a policy of sound financial management, ensuring that each year the School built up a sufficient surplus to allow for ongoing development, supported by a policy of prudent borrowing. Over the past 40 years something in the region of £13.5 million has been invested in the site, including the refurbishment of the Science Block, new classrooms for the Prep School, a new Art Block, a new Maths Block, the extension of the Music School, and new Astroturf pitches.

The Robinson Block, opened 2002



The Sports Hall, opened 1983



The Art Block, opened 2012

Building for the future

Over the past 425 years each generation has done much to support future generations. The flipside of the coin is that each generation has benefitted from the generosity of those who have gone before. And now we are asking you to join us and help raise £425,000 towards the cost of our new Sixth Form Centre. You can do this in 4 ways:-

- Buy a Brick for each child by waiving the return of their deposit
- Buy a Family Brick for £425
- Buy a Breeze Block for £2020
- Become a Benefactor for £10,000 and Name a Room

**HISTORICALLY, EVERY GENERATION AT WELLINGBOROUGH
HAS SUPPORTED FUTURE GENERATIONS**

1595 - 2020



We are delighted to hear the School is going to build a Sixth Form Centre, we are just sorry we won't all be around to enjoy it ourselves!

The Sixth Formers are crying out for a building where we can work, study and socialise in our own space. We all love the House system, which is such a great part of what makes the School different, and we enjoy interacting with the younger pupils in our Houses – but we also want our own space. Believe it or not, being around 13 year olds can be annoying at times.

As Mr Holman says, the Sixth Form marks a transition into adulthood. A dedicated Sixth Form Centre will give the next generation a chance to study in an environment suitable for serious A Level study, and equip us with the right learning skills for the next steps in life.

We ask for your help in supporting this 425th Anniversary Appeal, and we look forward to seeing all the Appeal's supporters at the Opening Party in 2021!



How can I help?

425th

ANNIVERSARY APPEAL

There are many ways that you can help:

OPTION 1: MAKE THE PLEDGE

We invite every parent to complete and return the enclosed PLEDGE FORM, and Buy A Brick with their child's name inscribed.



Supporting the Sports Hall, 1980-83

Being remembered for perpetuity

OPTION 2: DONATE £425 NOW

Alternatively, those families who have one or more children at the School now or who have had children pass through the School may opt to make a one-off gift now of £425, a sum that reflects the School's 425th anniversary in 2020. This would entitle you to have your family name inscribed on a brick – so we call this the "Buy A Brick" option.

OPTION 3: DONATE £2020 NOW

Alternatively, those families which are able, may wish to go a bit further and "Buy a Breeze Block"! The cost is £2,020, to reflect the year 2020 – the year the foundation stone will be laid.

OPTION 4: BECOME A BENEFACTOR AND NAME A ROOM

Those families able to donate £10,000 or more would have their generosity and support recognised by a designated area in the Sixth Form Centre being named in their honour, or in memory of a loved one.

For any gifts received in excess of £10,000, the donor would be classed as a "Benefactor" and the School would be honoured to consider naming designated areas in the Sixth Form Centre. In one of the Colleges at the University of Durham a retired clergyman with a keen sense of humour asked that a toilet be named in his honour – so nothing is ruled out! In September 2019 the School unveiled a series of Benefactors Boards in the Chapel Porch. These record for posterity the names of those Benefactors who have shown major support for the School over the past four centuries. Names are recorded in four categories (by reference to the value of sterling in 2018):-

- School Patrons (£100,000 plus)
- Foundation Benefactors (£50,000 to £100,000)
- Major Benefactors (£25,000 to £50,000)
- Benefactors (£10,000 to £25,000)



Early benefactors

AND HOW ABOUT GIFT AID?

As one of the oldest surviving charities in Northamptonshire, the School is able to benefit from Gift Aid. Donations from UK taxpayers benefit from the government's Gift Aid scheme. For every £1 donated, the School can claim 25 pence of tax at no additional cost to you. In this way, a gift of £100 is worth £125 to the School.

Higher rate taxpayers can also benefit from tax relief by claiming back the difference between the higher rates of tax at 40 or 45 per cent and the basic rate of tax at 20 per cent on the total value of your gross donation. So a gift of £100,000 to the School could be worth £125,000 with the addition of Gift Aid, yet 'cost' you £75,000 once the tax has been reclaimed.



NOT OF AN AGE BUT FOR ALL TIME

1595 - 2020



Wellington School

Founded 1595

